



IBRA International Bone
Research Association



SCIENTIFIC NETWORKING

Content

4 – 5	Mission
6 – 7	History and Organization
8 – 9	Research and Education Committees
10 – 11	Global Organizational Structure
12 – 13	Continuing Medical Education
14 – 15	Scholarships and Research
16 – 17	Virtual Campus
18 – 19	IBRA Training Centers
20 – 21	Membership

- I** – International transdisciplinary cooperation
- B** – Bone and tissue management for the best benefit of patients
- R** – Research and continuing medical education
- A** – Association for scientific networking

IBRA – International Bone Research Association

The International Bone Research Association (IBRA) is an independent non-profit organization particularly for specialized surgeons and research scientists.

IBRA's core activities are medical courses on various levels, multinational symposia, scholarship programs, and research projects focusing particularly on:

- clinical management (traumatology and orthopedic surgery)
- materials research including hardware development
- biomechanics and engineering

IBRA puts its emphasis primarily on:

- Head
- Upper Limbs
- Lower Limbs

Transdisciplinarity:

IBRA courses are shaped in a transdisciplinary manner, i.e. healthcare professionals of a variety of disciplines mutually reach out for improvements in treatment for the benefit of the patient.

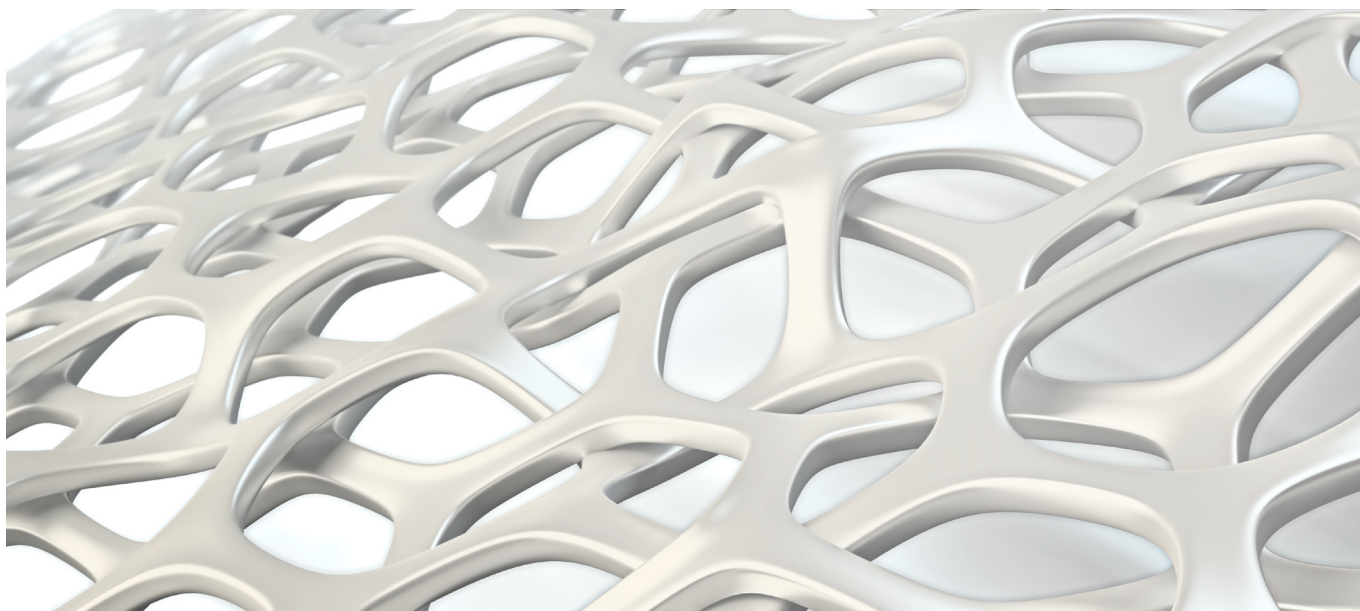
Expert opinions:

Beside the widely disseminated standards of evidence-based medicine, it is our scientific goal to provide sufficient space for expert opinions.

Many of our faculty and IBRA members shape the research of today and establish improved standards for tomorrow.

Interdisciplinarity:

IBRA combines high-class surgical expertise with interdisciplinary exchange, i.e. ideas and know-how of engineers, sports scientists, and biomechanics are included in trainings. They infuse background information on complementary knowledge and ongoing developments relevant to surgeons.



IBRA – an international transdisciplinary network in continuing medical education and research

IBRA encourages the development of innovative solutions in a friendly, loyal atmosphere. Future-oriented open-mindedness and international acceptance form the basis for first-rate assistance in realising modern research projects and promoting individual careers. IBRA maintains close contacts with respected scientific societies and journals around the world. As an international forum reaching across geographic and cultural borders, IBRA offers an up-to-date network for the exchange of experience and knowledge in applied bone and tissue research.

History

On the initiative of eighteen forward-looking clinicians, IBRA was founded in Zurich, Switzerland on September 25, 2004. Its primary objectives are the exchange of professional knowledge, promotion of new scientific developments, engineering of the musculoskeletal system, coordinated (multicenter) research and highly specialized further training are the primary aims of IBRA.

IBRA General Assembly

Board of Directors

IBRA



Prof. Dr. Rainer Meffert
Würzburg, DE
President



Prim. Dr. Wolfgang Hintringer
Vienna, AT
Past-President



Prof. Dr. Dr. Philipp Jürgens
Munich, DE
Chairman REC Head



OA Dr. Christoph Pezzeri
Vienna, AT
Chairman REC Upper Limbs



Prof. Dr. Dr. Victor Valderrabano
Basel, CH
Chairman REC Lower Limbs



Prof. Dr. Hermann Krimmer
Ravensburg, DE

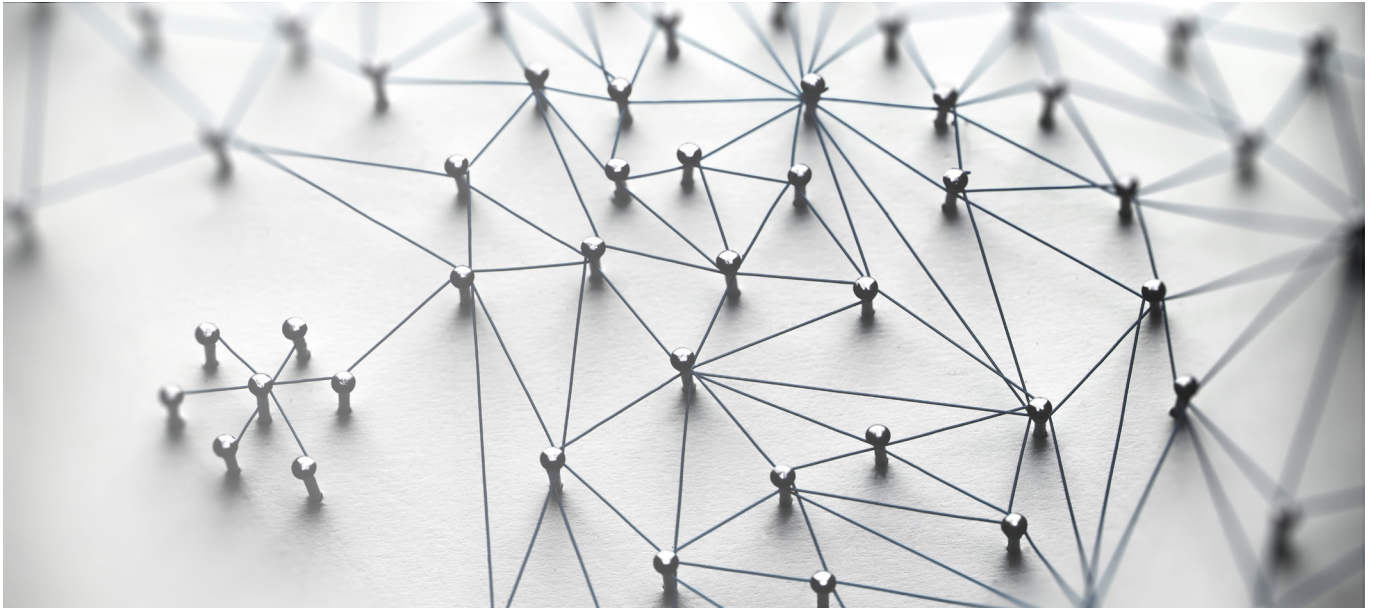


Dr. Radek Kebrle
Mladá Boleslav, CZ



Prof. Dr. Dr. Andreas Neff + 2 representatives
Marburg, DE of donor organizations

Administration Office
Event Management



IBRA – from evidence-based medicine through expert opinions to scientific innovations

International cooperation is an important asset of our organization. In research and education, views of and approaches to orthopedy and traumatology often differ between the continents. Therefore, bringing together multinational teachers, course participants and researchers opens new perspectives and space for a more holistic understanding.

Bone and tissue management for the best benefit of patients is the core of our interest. All health care professionals, from surgeons to physical therapists, nurses, and engineers of new tools and instruments, work across various disciplines in order to further improve the current standards.

Research and Education Committees (REC)

The IBRA Research and Education Committees (REC) are platforms supervising quality assurance and excelling professional expertise. They put emphasis on promoting individual academic and professional careers beyond geographic and cultural borders. The three Research and Education Committees focus on the body segments head, upper limbs and lower limbs, and are named accordingly.

Core tasks of the IBRA Research and Education Committees are:

- supervising quality standards of the various courses in the continuing medical education (CME)
- evaluating course participants' requirements in order to improve the educational offer
- assessing scholarship applications for IBRA Training Centers and confirming accepted candidates
- assessing and advising potential (multicenter) research studies of IBRA Training Centers

The IBRA Research and Education Committees consist of the following members:



Head:

- Philipp Jürgens, Munich, Germany (Chairman)
- Christian Freudlsperger, Heidelberg, Germany
- Benoit Schaller, Bern, Switzerland
- Tim Lloyd, London, United Kingdom
- + representatives of donor organizations



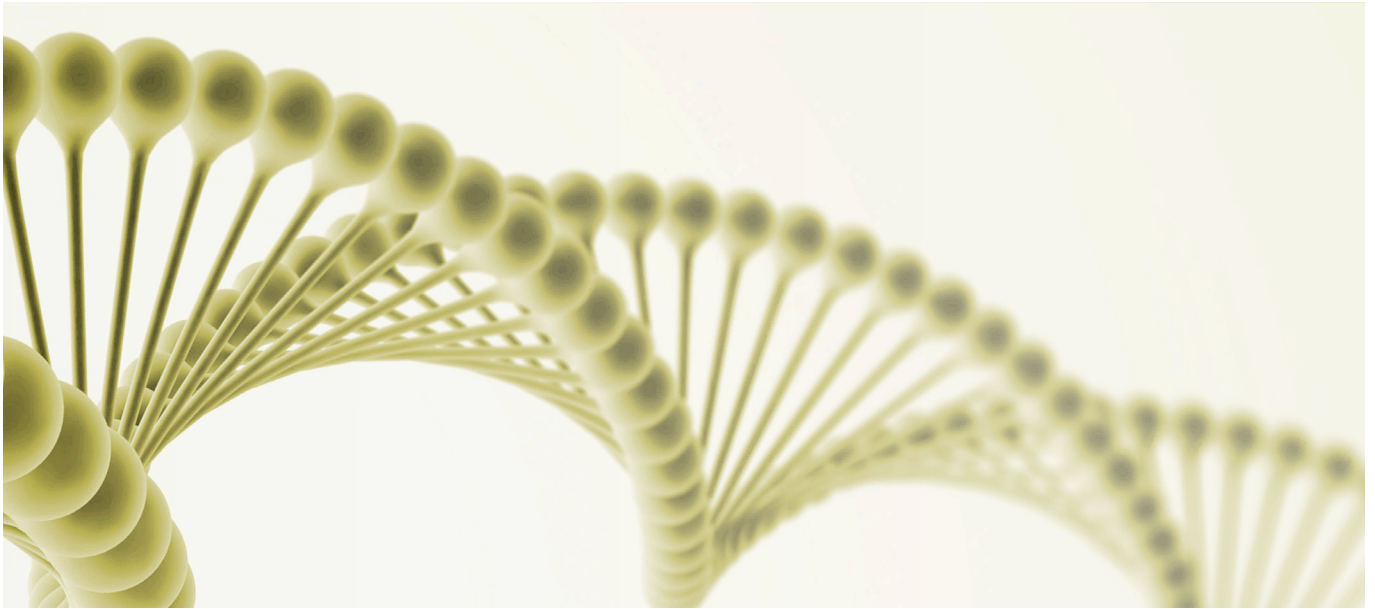
Upper Limbs:

- Christoph Pezzei, Vienna, Austria (Chairman)
- Rames Mattar Jr., Sao Paulo, Brazil
- Kilian Wegmann, Cologne, Germany
- Adam Watts, Wrightington, United Kingdom
- + representatives of donor organizations



Lower Limbs:

- Victor Valderrabano, Basel, Switzerland (Chairman)
- Christian Plaass, Hanover, Germany
- Mario Ulises Herrera Perez, Tenerife, Spain
- + representatives of donor organizations



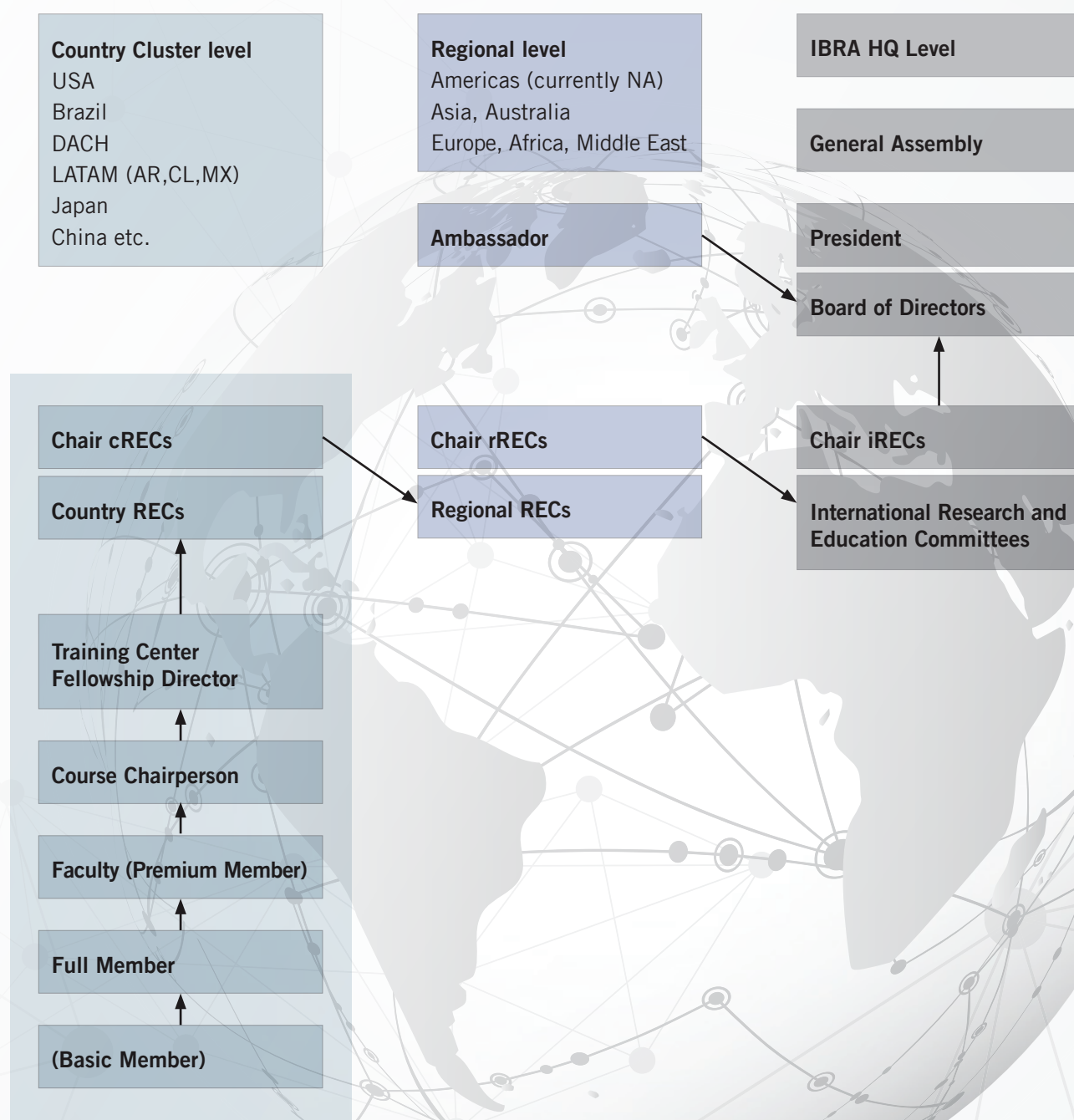
IBRA – an organization of surgeons for health care professionals

Research and education are major guarantors of successful professional development and advancement of patients' treatment.
Education

- *disseminates valuable research results*
- *gives rise to new ideas for research projects*

Collaboration Scheme of Training Centers and Research & Education Committees

IBRA North America is the first regional section of our association. The goal of the regional structure is our full-time availability for members living all over the world. Additionally, they provide more opportunities for decision-making of members of relevance to their respective continent(s). The regional Research and Education Committee consist, therefore, of representatives of our country clusters.





IBRA – regionally and in country clusters

Country clusters

The country clusters are usually assembled by training center fellowship directors of countries with the same language family (e.g. Spanish, Chinese, German, Japanese or English). They especially decide for local scholarships.

Continuing Medical Education

IBRA offers a variety of educational events around the globe, which are headed by a multinational faculty.

Examples include:

- level-oriented medical education courses
- practical surgical workshops
- national and international congresses and symposia
- webinars

Course composition: Resident – Fellow – Master

IBRA offers a variety of course levels for surgeons in different stages of their career.

Furthermore, scholars can apply for

- scholarships at one of our IBRA Training Centers
- research grants



Resident Courses

Target audience

Recommended for senior residents and physicians in sub-specialty training

Main specialty

The course offers the basics in clinical diagnostics, treatment and follow-up. The focus is on state-of-the-art surgical techniques.

Objective

Learning state-of-the-art interventions



Fellow Courses

Target audience

Recommended for fellows, attendings / consultants

Main specialty

The faculty members first classify the injury or deformity, and then share their preferred approach, treatment, and follow-up of cases with advanced levels of difficulty

Objective

Handling challenging cases



Master Courses

Target audience

Recommended for senior surgeons and department heads

Main specialty

An interactive seminar and hands-on workshop, addressing trauma and reconstruction with representative cases and discussions. The international faculty presents the latest innovations, and provides an opportunity to exchange experiences with the participating senior surgeons.

Objective

Re-thinking good practices, promoting improvements



Best medical and scientific contributors, contact opportunities, and continuing education in related disciplines

IBRA offers special courses for introducing clinicians to specific treatment methods. The goal of these courses is to provide clinicians with useful information on bone surgery in order to improve their clinical skills.

Our website offers the overview of all educational events, IBRA news and up-to-date online materials.

If you wish to register for a course, view a recorded webinar again, or apply for a scholarship, please visit our website!

→ **www.IBRA.net**

Virtual Campus

Beside hands-on trainings and other life events, IBRA provides e-learning materials through its Virtual Campus. The access is for members only, allowing communication in a familiar and secure environment.

Materials available include a growing number of recorded webinars, webcasts, and online courses as well as a library of scientific articles, case discussions and instructional videos.



Virtual Campus



Virtual Course

Virtual Courses , Webcasts & Webinars

IBRA offers a wide range of training courses led by our expert faculty. Courses range from short webinars and webcasts to complex courses with multiple modules.



Instructional Video

Instructional Videos & Recordings

Our Instructional Videos offer recorded surgeries with commentary from our expert faculty.



Scientific Articles

Scientific Articles & Other Resources

Our growing library offers selected scientific articles and other resources for further medical education.



House of Faculty & Training Center Resources

Beside the materials for learners, the IBRA Virtual Campus includes two areas exclusively for our faculty and training centers. The House of Faculty provides all information materials for chairpersons and faculty members of a course or live webinar. Materials include guidelines, relevant information on CME requirements, and a selection of examples regarding didactics and methodology. Furthermore, materials for conducting courses, such as instructional videos, can be previewed. The Training Center Resources allow fellowship directors and their teams to prepare for the application process, conduct, and results required for the respective scholarship programs. Additionally, valuable materials prepared by fellowship directors from all over the globe can be used for inhouse trainings of residents and colleagues.

Scholarship Program

Scholars have the first-hand opportunity to exchange experiences with renowned clinicians in IBRA Training Centers. IBRA's education program provides a platform for scientific exchange. The main goal of the IBRA Scholarship Program is to promote individual career development by providing financial support for clinical training and for research. IBRA Training Centres have been selectively chosen for their ability to provide a broad clinical experience in the treatment of patients whilst promoting exemplary research.

→ CONGRESS PARTICIPATION

A : Partial financing of participation in international congresses

This program is strictly limited to junior physicians such as residents in training and PhD students. Strong preference will be given to candidates giving a presentation at the congress or presenting a scientific poster.

→ 1 – 4 WEEKS

B : Clinical residential visit to a foreign host institution

This program is suitable for clinical training such as learning a new surgical technique, including pre- and postoperative management.

→ 1 – 3 MONTHS

C : Clinical and scientific residential stay at a foreign host institution

This program combines clinical training with active participation in a research project, or literature review with an opportunity for publication. It is designed for promoting academic careers.













IBRA – an up-to-date network for the exchange of experience and knowledge in applied bone and tissue research

IBRA's Education Program provides a platform for scientific exchange between its members. The main goal of the IBRA Scholarship Program is to promote individual career development by providing financial support for clinical training and for research in various IBRA Training Centers.







Upper Limbs

-  **Argentina**
Hospital Italiano, Buenos Aires
ClimBA, Buenos Aires
-  **Australia**
John Hunter Hospital, Newcastle
Dandenong Hospital, Melbourne
-  **Austria**
Unfallkrankenhaus Lorenz Böhler, Vienna
Medical University of Innsbruck
-  **Brazil**
Instituto Nacional de Traumatologia e Ortopedia, Rio de Janeiro
Beneficência Portuguesa Hospital, São Paulo
Medical School of University of São Paulo
Albert Einstein Israelite Hospital, São Paulo
Instituto Vita, Department of Hand, Wrist & Microsurgery Surgery and
Department of Shoulder & Elbow Surgery, São Paulo
-  **Chile**
Santa Maria Clinic, Santiago
-  **Colombia**
Medellín Health Centers, Medellín
-  **Czech Republic**
Klinika Dr. Pírka Mladá Boleslav
-  **Germany**
Elisabeth Hospital Ravensburg
Universiy Hospital Cologne
University of Würzburg
Klinikum rechts der Isar, Munich
-  **Italy**
Policlinico of Modena
Policlinico GB Rossi, University Hospital Verona
Galeazzi Hospital - Hand Surgery Unit, Milan
Azienda Ospedaliero-Universitaria Careggi (A.O.U.C.) -
Department of Handsurgery and Reconstructive Microsurgery, Firenze
-  **Netherlands**
Maastricht University Medical Center
-  **Singapore**
Singapore General Hospital (SGH) - Hand & Reconstructive Microsurgery
-  **South Korea**
Seoul National University Bundang Hospital
Korea University Medicine Anam Hospital
-  **Spain**
Centro Medico Teknon, Barcelona
-  **Switzerland**
Kantonsspital of St. Gallen
-  **United Kingdom**
Wrightington Hospital
Guy's and St Thomas' NHS Foundation Trust, London
-  **USA**
Badia Hand to Shoulder Center, Miami
Banner Good Samaritan Medical Center, Phoenix

Lower Limbs

-  **Argentina**
Austral University Hospital, Orthopedic and
Traumatology Department, Buenos Aires
-  **Australia**
John Hunter Hospital, Newcastle
Nepean Hospital, Orthopaedic, Kingswood
-  **Brazil**
Paulista School of Medicine - Federal University
of São Paulo
Albert Einstein Israelite Hospital, São Paulo
Instituto Vita, Department of Foot & Ankle Surgery,
São Paulo
-  **Chile**
Santa Maria Clinic, Santiago
-  **Germany**
Medical School at Diakovere Annastift, Hannover
-  **Japan**
Laketown Orthopaedic Hospital, Koshigaya
-  **Spain**
Hospital Universitario de Canarias, Tenerife
-  **Switzerland**
Swiss Ortho Center, Basel
Kantonsspital Winterthur
-  **United Kingdom**
Trauma and Orthopaedic Department of the
North West Anglia NHS Foundation Trust, Peterborough
-  **USA**
University of Iowa – Carver College of Medicine,
Department of Orthopaedic and Rehabilitation
Foot and Ankle Division, Iowa City

Head

-  **Brazil**
São Paulo State University
Samaritano Higienópolis Hospital São Paulo
-  **France**
University of Amiens
University of Lille
-  **Germany**
University of Münster
University Hospital of Giessen and Marburg
-  **Italy**
Sapienza Università di Roma
-  **Switzerland**
Inselspital University Hospital of Bern
-  **United Kingdom**
Sheffield Teaching Hospitals

For detailed information please visit our website.



A dense global grid of training centers provides an interesting range of options for scholarship applicants

The worldwide network of IBRA Training Centers, which specialise in bone research and head and upper / lower limbs surgery, provides scholarship applicants with an interesting range of options.

IBRA Membership

Members of IBRA have privileged access to materials and courses in topics related to bone and tissue management. They are also offered opportunities for their individual career development.

→ THE GATEWAY TO THE IBRA AFFILIATION

Basic Membership

On the IBRA entry level, all health professionals in orthopedy and/or traumatology can join by mouse-click through our IBRA website. The new IBRA member gets regular updates on events, access to our database with an increasing number of materials, recorded webinars, and contact options to others members. The IBRA Basic Membership is free of charge.

→ BENEFITS FOR REGULAR COURSE PARTICIPANTS

Full Membership

Full members have access to courses of various levels at a significantly reduced course fee. For that purpose, only surgeons can enter this membership level. Full members constitute the voting body of the IBRA General Assembly.

→ APPRECIATED SCIENTIFIC COMMITMENT

Premium Membership

is offered to surgeons who joined at least once our faculty or become IBRA Board Members. It includes all benefits of Basic and Full Membership and is lifetime free of charge.



Become an IBRA Member!

IBRA is committed to providing its members with resources and benefits to support their personal development, and to facilitate networking in medical training, education and research.

IBRA members shape our organization in various ways. Some of them form the superior decision-making body. Some act as officers in the Board, or in Research and Education Committees. Others are members of the faculty. Yet others participate in educational events and exchange experience with specialists in training centers, or join the research.

*If you would like to join us, please visit **www.ibra.net/Membership***



Dr. Andrew Greenberg, Great Neck, New York, USA

Chairperson, IBRA Master Course

The IBRA has revolutionized orthopaedic education by using pre-fractured cadaveric specimens in their labs. Traditional courses offer the surgeon no challenge or thought in implant application. The IBRA's use of pre-fractured specimens, in addition to preoperative x-rays and CT scans, force the surgeon to think as if he or she were in the operating room. Additionally, post-fixation room-wide discussions create a unique and invaluable learning tool, yielding friendly debates about planning and execution.



Priscilla Góes Medéa de Mendonça, Brazil

IBRA Scholarship at Banner University Medical Center, Phoenix, US

„I was very impressed by how well research and teaching are integrated into daily clinical life, turning morning conferences into an educational event.

I would like to express my deepest appreciation to the IBRA committee for giving me the opportunity to gain further experience and widen my horizon. This scholarship program has been of great personal benefit to my career.“



Prof. Dr. Dr. Victor Valderrabano, Basel, Switzerland

IBRA Training Center, Basel

SWISS ORTHO CENTER is a prestigious Swiss Orthopaedic Institution and IBRA Training Center hosting colleagues for Lower Extremity Orthopaedics and Foot & Ankle Orthopaedics from all over the world. For many years, I have been enjoying the exchange with ambitious colleagues, and the opportunity to share my expertise.

Fellows also enjoy a thriving scientific environment with excellent research opportunities.



Dr. Jeffrey Hughes, Sydney Australia

Participant IBRA Master Course, later faculty member and chairperson

A number of years ago I was introduced to the concept of the IBRA Cadaver courses with the simulation and reproduction of elbow fractures/dislocations. It seemed a good way to experience and up-skill in their management which can be both varied in nature and difficult, even for skilled surgeons. My first lab as a participant exposed me to nearly 20 different fracture dislocations of various types being managed by skilled elbow surgeons from all around the world - with a “hands-on” approach - each with their own different tips and tricks, which were shared in a collegial way. The learning took place on many levels in terms of planning and surgical exposure. Everyone, no matter how junior or senior, took something with them. I returned a few years later as an instructor, and essentially continued the learning process.

Headquarters

IBRA
International Bone Research Association
Hochbergerstrasse 60E
CH-4057 Basel
Phone +41 61 319 05 05
Fax +41 61 319 05 19
info@ibra.net
www.ibra.net

Administration Office

IBRA
International Bone Research Association
North America, Inc.
224 Valley Creek Boulevard, Suite 100
Exton, PA 19341
info@ibra.net
www.ibra.net